



DAGA POWER

DAGA POWER GROUP

ISO 9001: 2015 CERTIFIED ORGANIZATION



CABLE MANAGEMENT



+91 9007080808



32 EZRA STREET, 5TH FLOOR ROOM NO #505,
KOLKATA- 700001



JALAN INDUSTRIAL COMPLEX, NNH-6, GATE
NO.1, 6TH RIGHT LANE, VILL: BENIARA, PS DOMJUR, PO:
BEGRI, HOWRAH- 711411

www.dagapowergroup.in

marketing@dagapowergroup.in



DAGA POWER

ABOUT US

DAGA POWER SYSTEMS & ENGINEERS PVT. LTD., is a Kolkata, West Bengal Based Leading Manufacturer of cable trays & cable tray accessories which started its journey in the year 2003. During the Last more than 15 years of our operation, we have added several other products as well to our product basket and we are currently manufacturing a vast variety of cable glands, cable lugs, cable trays, cable tray accessories, Tower Structure & earthing materials.

MISSION

Our Mission is to offer excellent products, in accordance with both national & international standards and set a benchmark for our competitors keeping our codes of conduct and integrity intact.

VISION

Our vision is to grow our multi-disciplinary team in order to cater to the growing demand of our products in India & abroad with best quality products on a wider scale using high quality manufacturing process & best quality raw materials available in our industry, so that we can become the No. 1 choice of customers through excellence and efficiency in consignment execution in all aspects.

CABLE MANAGEMENT



- CABLE MANAGEMENT SYSTEMS
- CABLE LUGS / THIMBLES
- CABLE GLANDS
- EARTHING SYSTEMS
- JUNCTION BOXES
- TL / SS / RE STRUCTURES

NO STOP TOWARDS EXCELLENCE SINCE 1996



ISO 9001: 2015 COMPANY

SINCE ITS INCORPORATION IN THE YEAR 2003, COMPANY OVER THE YEARS HAS VENTURED INTO DIVERSIFIED PRODUCTS. WE ARE ASSOCIATED WITH SOME THE LEADING BUSINESS CONGL OMERATES, LEADING EPC CONTRACTOR, REAL ESTATE COMPANIES, ETC. WITH ITS EVER GROWING PRODUCT PORTFOLIO COMPANY AIM TO BECOME A LEADING MANUFACTURER OF CABLE MANAGEMENT SYSTEMS & STRUCTURAL STEEL FABRICATORS. OUR WORKS IS LOCATED AT:

**JALAN INDUSTRIAL COMPLEX, GATE NO -3,
NH-6, VILL: BENARIA, PS: DOMJUR,
HOWRAH -711411**

AT PRESENT OUR PRODUCT BASKET INCLUDES FOLLOWING PRODUCTS:

- CABLE TRAYS & ACCESSORIES
- CABLE GLANDS
- CABLE LUGS
- EARTHING PIPES
- EARTHING RODS
- LIGHTINING SPIKES
- EARTHING PLATES
- EARTHING STRIPS / FLATS
- LIGHT & HEAVY STEEL STRUCTURAL FABRICATIONS



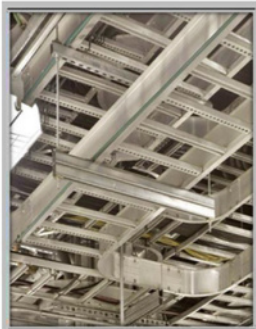
CABLE TRAYS

We manufacture cable trays of different types in different sizes ranging from 50mm to 1000 mm (W) as per the needs of our customers. We also manufacture accessories for cable trays like reducers, bends, tees, verticals risers, cross & elbow. Various types of cable trays manufactured by us are as follows:

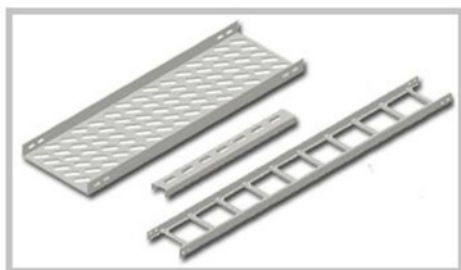
- Ladder Type cable trays
- Perforated Type cable trays
- Solid Bottom Type cable trays
- Raceways

We source our raw materials from renowned companies like SAIL, TATA Steel, JSPL, JSW steel, Swastika Steel, Baba Ispat & Hindusthan Zinc Ltd. We have in house QA & QC department which carries out stringent checks on both our raw materials & finished products & ensure that they meet following IS:

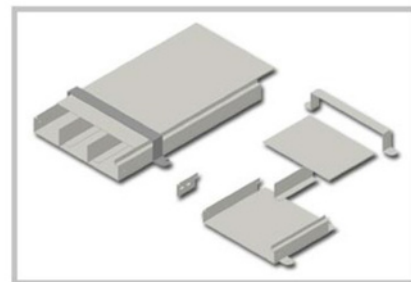
1. MS / HR Sheets: IS: 10748 / IS: 1079
2. Angles & Flats: IS: 2062
3. Galvanizing: IS: 2629/2062/5388



INSTALLATION OF OUR PRODUCTS AT CLIENT SITES



LADDER & PERFORATED CABLE TRAY



RACEWAYS / WIREWAYS

ANGLE LADDER TYPE TRAYS



Angle Ladders are more commonly used in steel & power sectors for laying of mainly heavy power cables. These come in a standard length of 3000 mm and are fabricated out of MS angles & flats. The standard specifications of the product are as below but can be customized as per customer / consultants:

MEDIUM DUTY ANGLE LADDER TYPE TRAYS			
CAT NO.	WIDTH	ANGLE SIZE	FLAT SIZE
DPMALT -001	150 MM	40X40X6 MM	25X6 MM
DPMALT -002	200 MM	40X40X6 MM	25X6 MM
DPMALT -003	250 MM	40X40X6 MM	25X6 MM
DPMALT -004	300 MM	40X40X6 MM	25X6 MM
DPMALT -005	400 MM	40X40X6 MM	25X6 MM
DPMALT -006	600 MM	40X40X6 MM	25X6 MM
DPMALT -007	750 MM	40X40X6 MM	25X6 MM
DPMALT -008	900 MM	40X40X6 MM	25X6 MM
DPMALT -009	1000 MM	40X40X6 MM	25X6 MM
HEAVY DUTY ANGLE LADDER TYPE TRAYS			
CAT NO.	WIDTH	ANGLE SIZE	FLAT SIZE
DPHALT -001	150 MM	50X50X6 MM	25X6 MM
DPHALT -002	200 MM	50X50X6 MM	25X6 MM
DPHALT -003	250 MM	50X50X6 MM	25X6 MM
DPHALT -004	300 MM	50X50X6 MM	25X6 MM
DPHALT -005	400 MM	50X50X6 MM	25X6 MM
DPHALT -006	600 MM	50X50X6 MM	25X6 MM
DPHALT -007	750 MM	50X50X6 MM	25X6 MM
DPHALT -008	900 MM	50X50X6 MM	25X6 MM
DPHALT -009	1000 MM	50X50X6 MM	25X6 MM

THE STANDARD FINISH OF THE PRODUCT IS AS BELOW:

1. RED OXIDE PAINTED & FINISH PAINTING (SHADE AS PER CUSTOMER REQUIREMENT)
2. HOT DIP GALVANIZED

REMARK:

1. SIZE OF COUPLER PLATE : 25 MM (W) X 210 MM (L)
2. NO OF NBW (SET) PROVIDED WITH EACH COUPLER: 4 NOS (SIZE: M8 X 30 MM)
3. APART FROM ABOVE ANGLE LADDERS CAN BE CUSTOMIZED AS CUSTOMER'S REQUIREMENT & DRAWING.

LADDER TYPE TRAYS

We manufacture Ladder type cable trays as per Nema Standard no VE-1 & relevant Indian Standards. The Ladder type cable trays can be fabricated out of 1.5 to 3 mm thick HR sheet and height may vary from 50 mm to 150 mm as per requirements of customers. Width of our product varies from 100 mm to 1500 mm.

The available standard finish are as follows:

1. Red Oxide Painted
2. Red Oxide & Finish Painted
3. Powder coated
4. Hot Dip Galvanized

Depending on the load bearing capacities & no of cables that can be laid over each tray, we have classified ladder type cable trays under following categories:

1. Light Duty Ladder Tray
2. Medium Duty Ladder Tray
3. Heavy Duty Ladder Trays
4. Extra Heavy Duty ladder Trays

Our products have been supplied and installed in PSUs' & govt departments such as Coal India, CPWD, DAE, ESIC, GAIL, OPTCL, Oil India, SAIL, TATA steel, WBSETCL, NMDC, KMRCL, NRL, etc. Our Private Sector Clients include Reputed Corporate Houses such as JSPL, JSW, Lafarge-Holcim Group, Aditya Birla Group, etc

The standard sizes under each classification have been given overleaf.

LIGHT DUTY LADDER TYPE TRAYS



LIGHT DUTY LADDER TYPE TRAYS				
CAT NO.	WIDTH	CHANNEL SIZE	RUNG SIZE	THICKNESS
DPLLT -001	150 MM	50X15X15 MM	30X10X10 MM	1.6 MM
DPLLT -002	150 MM	50X15X15 MM	30X10X10 MM	2 MM
DPLLT -003	200 MM	50X15X15 MM	30X10X10 MM	1.6 MM
DPLLT -004	200 MM	50X15X15 MM	30X10X10 MM	2 MM
DPLLT -005	250 MM	50X15X15 MM	30X10X10 MM	1.6 MM
DPLLT -006	250 MM	50X15X15 MM	30X10X10 MM	2 MM
DPLLT -007	300 MM	50X15X15 MM	30X10X10 MM	1.6 MM
DPLLT -008	300 MM	50X15X15 MM	30X10X10 MM	2 MM
DPLLT -009	400 MM	50X15X15 MM	30X10X10 MM	1.6 MM
DPLLT -010	400 MM	50X15X15 MM	30X10X10 MM	2 MM
DPLLT -011	450 MM	50X15X15 MM	30X10X10 MM	1.6 MM
DPLLT-012	450 MM	50X15X15 MM	30X10X10 MM	2 MM
DPLLT-013	500 MM	50X15X15 MM	30X10X10 MM	1.6 MM
DPLLT-014	500 MM	50X15X15 MM	30X10X10 MM	2 MM
DPLLT-015	600 MM	50X15X15 MM	30X10X10 MM	1.6 MM
DPLLT-016	600 MM	50X15X15 MM	30X10X10 MM	2 MM
DPLLT-017	750 MM	50X15X15 MM	30X10X10 MM	1.6 MM
DPLLT -018	750 MM	50X15X15 MM	30X10X10 MM	2 MM
DPLLT -019	900 MM	50X15X15 MM	30X10X10 MM	2 MM
DPLLT -020	1000 MM	50X15X15 MM	30X10X10 MM	2 MM

REMARKS:

1. SIZE OF COUPLER FOR LIGHT DUTY TRAYS: 40 MM (W) X 210 MM (L)
2. NO OF NUT, BOLT WASHERS (SET) PROVIDED: 4 NOS FOR EACH COUPLER
3. FINISH: AS PER CUSTOMER'S REQUIREMENT
4. THICKNESS TOLERANCE: $\pm 5\%$
5. APART FROM ABOVE SPECIFICATIONS, LIGHT DUTY CABLE TRAYS CAN BE CUSTOMISED AS PER CUSTOMER'S REQUIREMENT.

MEDIUM DUTY LADDER TYPE TRAYS

MEDIUM DUTY LADDER TYPE TRAYS				
CAT NO.	WIDTH	CHANNEL SIZE	RUNG SIZE	THICKNESS
DPMLT -001	150 MM	75X15X15 MM	35X15X15 MM	2 MM
DPMLT -002	150 MM	75X15X15 MM	35X15X15 MM	2.5 MM
DPMLT -003	200 MM	75X15X15 MM	35X15X15 MM	2 MM
DPMLT -004	200 MM	75X15X15 MM	35X15X15 MM	2.5 MM
DPMLT -005	250 MM	75X15X15 MM	35X15X15 MM	2 MM
DPMLT -006	250 MM	75X15X15 MM	35X15X15 MM	2.5 MM
DPMLT -007	300 MM	75X15X15 MM	35X15X15 MM	2 MM
DPMLT -008	300 MM	75X15X15 MM	35X15X15 MM	2.5 MM
DPMLT -009	400 MM	75X15X15 MM	35X15X15 MM	2 MM
DPMLT -010	400 MM	75X15X15 MM	35X15X15 MM	2.5 MM
DPMLT -011	450 MM	75X15X15 MM	35X15X15 MM	2 MM
DPMLT-012	450 MM	75X15X15 MM	35X15X15 MM	2.5 MM
DPMLT-013	500 MM	75X15X15 MM	35X15X15 MM	2 MM
DPMLT-014	500 MM	75X15X15 MM	35X15X15 MM	2.5 MM
DPMLT-015	600 MM	75X15X15 MM	35X15X15 MM	2 MM
DPMLT-016	600 MM	75X15X15 MM	35X15X15 MM	2.5 MM
DPMLT-017	750 MM	75X15X15 MM	35X15X15 MM	2 MM
DPMLT -018	750 MM	75X15X15 MM	35X15X15 MM	2.5 MM
DPMLT -019	900 MM	75X15X15 MM	35X15X15 MM	2 MM
DPMLT -020	900 MM	75X15X15 MM	35X15X15 MM	2.5 MM
DPMLT -021	1000 MM	75X15X15 MM	35X15X15 MM	2 MM
DPMLT -022	1000 MM	75X15X15 MM	35X15X15 MM	2.5 MM

REMARKS:

1. SIZE OF COUPLER FOR LIGHT DUTY TRAYS: 70 MM (W) X 210 MM (L)
2. NO OF NUT, BOLT WASHERS (SET) PROVIDED: 8 NOS FOR EACH COUPLER
3. FINISH: AS PER CUSTOMER'S REQUIREMENT
4. THICKNESS TOLERANCE: $\pm 5\%$
5. APART FROM ABOVE SPECIFICATIONS, LIGHT DUTY CABLE TRAYS CAN BE CUSTOMISED AS PER CUSTOMER'S REQUIREMENT



DAGA POWER

HEAVY DUTY LADDER TYPE TRAYS

HEAVY DUTY LADDER TYPE TRAYS				
CAT NO.	WIDTH	CHANNEL SIZE	RUNG SIZE	THICKNESS
DPHLT -001	150 MM	100X15X15 MM	50X15X15 MM	2 MM
DPHLT -002	150 MM	100X15X15 MM	50X15X15 MM	2.5 MM
DPHLT -003	150 MM	100X15X15 MM	50X15X15 MM	3 MM
DPHLT -004	200 MM	100X15X15 MM	50X15X15 MM	2 MM
DPHLT -005	200 MM	100X15X15 MM	50X15X15 MM	2.5 MM
DPHLT -006	200 MM	100X15X15 MM	50X15X15 MM	3 MM
DPHLT -007	250 MM	100X15X15 MM	50X15X15 MM	2 MM
DPHLT -008	250 MM	100X15X15 MM	50X15X15 MM	2.5 MM
DPHLT -009	250 MM	100X15X15 MM	50X15X15 MM	3 MM
DPHLT -010	300 MM	100X15X15 MM	50X15X15 MM	2 MM
DPHLT -011	300 MM	100X15X15 MM	50X15X15 MM	2.5 MM
DPHLT-012	300 MM	100X15X15 MM	50X15X15 MM	3 MM
DPHLT-013	400 MM	100X15X15 MM	50X15X15 MM	2 MM
DPHLT-014	400 MM	100X15X15 MM	50X15X15 MM	2.5 MM
DPHLT-015	400 MM	100X15X15 MM	50X15X15 MM	3 MM
DPHLT-016	450 MM	100X15X15 MM	50X15X15 MM	2 MM
DPHLT-017	450 MM	100X15X15 MM	50X15X15 MM	2.5 MM
DPHLT -018	450 MM	100X15X15 MM	50X15X15 MM	3 MM
DPHLT -019	600 MM	100X15X15 MM	50X15X15 MM	2 MM
DPHLT -020	600 MM	100X15X15 MM	50X15X15 MM	2.5 MM
DPHLT -021	600 MM	100X15X15 MM	50X15X15 MM	3 MM
DPHLT -022	750 MM	100X15X15 MM	50X15X15 MM	2 MM
DPHLT -023	750 MM	100X15X15 MM	50X15X15 MM	2.5 MM
DPHLT-024	750 MM	100X15X15 MM	50X15X15 MM	3 MM
DPHLT-025	900 MM	100X15X15 MM	50X15X15 MM	2 MM
DPHLT-026	900 MM	100X15X15 MM	50X15X15 MM	2.5 MM
DPHLT-027	900 MM	100X15X15 MM	50X15X15 MM	3 MM
DPHLT-028	1000 MM	100X15X15 MM	50X15X15 MM	2 MM
DPHLT-029	1000 MM	100X15X15 MM	50X15X15 MM	2.5 MM
DPHLT-030	1000 MM	100X15X15 MM	50X15X15 MM	3 MM

HEAVY DUTY LADDER TYPE TRAYS

REMARKS:

1. SIZE OF COUPLER FOR LIGHT DUTY TRAYS: 70 MM (W) X 210 MM (L)
2. NO OF NUT, BOLT WASHERS (SET) PROVIDED: 8 NOS FOR EACH COUPLER
3. FINISH: AS PER CUSTOMER'S REQUIREMENT
4. THICKNESS TOLERANCE: $\pm 5\%$
5. APART FROM ABOVE SPECIFICATIONS, HEAVY DUTY CABLE TRAYS CAN BE CUSTOMISED AS PER CUSTOMER'S REQUIREMENT.

EXTRA HEAVY DUTY LADDER TYPE TRAYS



DAGA POWER

EXTRA HEAVY DUTY LADDER TYPE TRAYS				
CAT NO.	WIDTH	CHANNEL SIZE	RUNG SIZE	THICKNESS
DPEHLT -001	300 MM	150X15X15 MM	50X15X15 MM	2 MM
DPEHLT -002	300 MM	150X15X15 MM	50X15X15 MM	2.5 MM
DPEHLT -003	300 MM	150X15X15 MM	50X15X15 MM	3 MM
DPEHLT -004	400 MM	150X15X15 MM	50X15X15 MM	2 MM
DPEHLT -005	400 MM	150X15X15 MM	50X15X15 MM	2.5 MM
DPEHLT -006	400 MM	150X15X15 MM	50X15X15 MM	3 MM
DPEHLT -007	450 MM	150X15X15 MM	50X15X15 MM	2 MM
DPEHLT -008	450 MM	150X15X15 MM	50X15X15 MM	2.5 MM
DPEHLT -009	450 MM	150X15X15 MM	50X15X15 MM	3 MM
DPEHLT -010	600 MM	150X15X15 MM	50X15X15 MM	2 MM
DPEHLT -011	600 MM	150X15X15 MM	50X15X15 MM	2.5 MM
DPEHLT-012	600 MM	150X15X15 MM	50X15X15 MM	3 MM
DPEHLT-013	750 MM	150X15X15 MM	50X15X15 MM	2 MM
DPEHLT-014	750 MM	150X15X15 MM	50X15X15 MM	2.5 MM
DPEHLT-015	750 MM	150X15X15 MM	50X15X15 MM	3 MM
DPEHLT-016	900 MM	150X15X15 MM	50X15X15 MM	2 MM
DPEHLT-017	900 MM	150X15X15 MM	50X15X15 MM	2.5 MM
DPEHLT -018	900 MM	150X15X15 MM	50X15X15 MM	3 MM
DPEHLT -019	1000 MM	150X15X15 MM	50X15X15 MM	2 MM
DPEHLT -020	1000 MM	150X15X15 MM	50X15X15 MM	2.5 MM
DPEHLT -021	1000 MM	150X15X15 MM	50X15X15 MM	3 MM

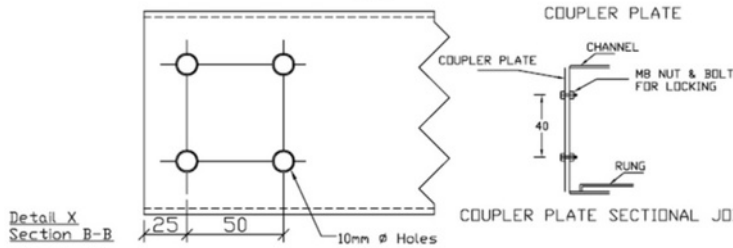
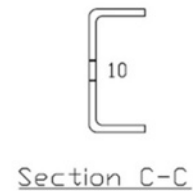
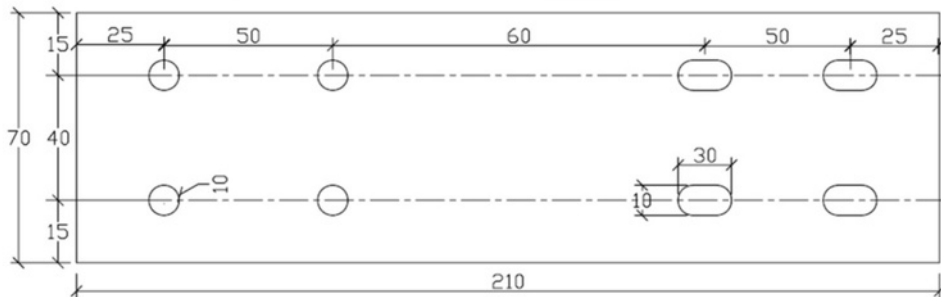
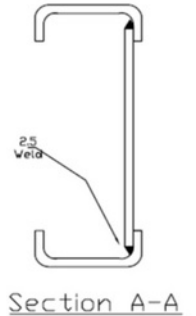
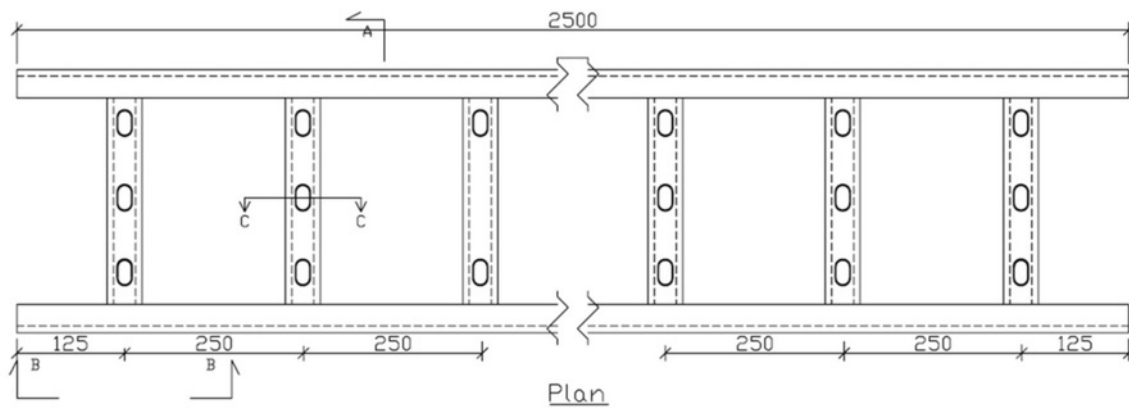
REMARKS:

1. SIZE OF COUPLER FOR LIGHT DUTY TRAYS: 70 MM (W) X 210 MM (L)
2. NO OF NUT, BOLT WASHERS (SET) PROVIDED: 8 NOS FOR EACH COUPLER
3. FINISH: AS PER CUSTOMER'S REQUIREMENT
4. THICKNESS TOLERANCE: $\pm 5\%$
5. APART FROM ABOVE SPECIFICATIONS, HEAVY DUTY CABLE TRAYS CAN BE CUSTOMISED AS PER CUSTOMER'S REQUIREMENT.



DAGA POWER

GA DRAWING OF LADDER TYPE TRAYS



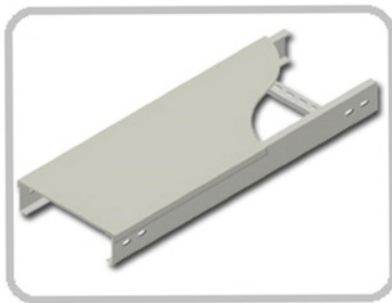
COUPLER PLATE SECTIONAL JOINT

SUPPLIER : DAGA POWER SYSTEM & ENGG (P) LTD.		
CLIENT :		
YOUR ENQUIRY DATED:		
TITLE : LADDER TYPE CABLE TRAY		
DRG NO:		
SCALE : NTS	PAGE : 1 OF 1	DATE:

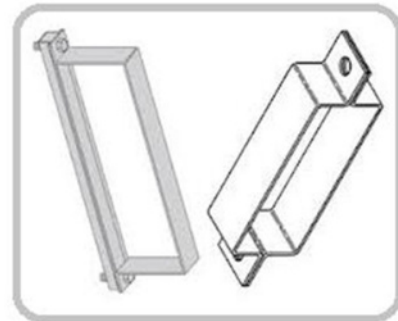
COVERS FOR LADDER TRAYS

In order to protect cables from any damage due to Water, Dust, Oil, etc or for preventing loss of signal, voice or data, it becomes necessary to cover the cable trays. Depending on nature of protects and usage, the covers for ladder tray can be classified as under:

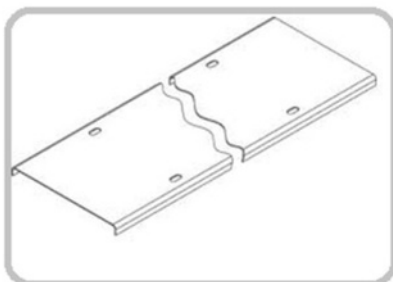
- Plain Covers (Push To Fit)
- Plain Covers (Clamp Type)
- Plain covers (Ventilated type)
- Dome Shaped Covers with spacing
- Dome Shaped Covers without spacing
- Combined Type Covers



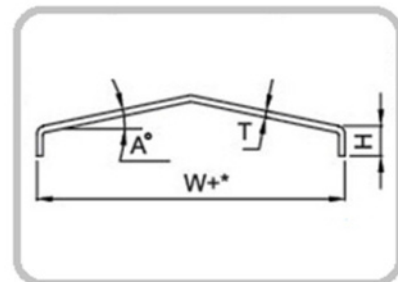
PLAIN COVERS (PUSH TO FIT)



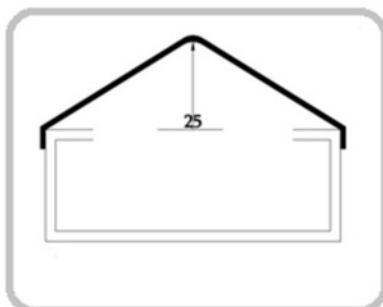
CLAMPS FOR PLAIN COVERS



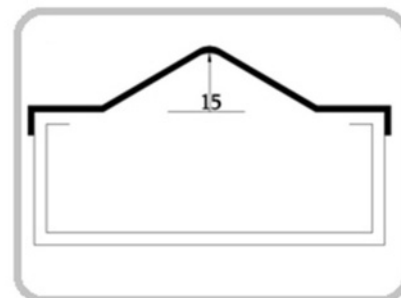
PLAIN COVER (VENTILATED)



DOMES COVER WITH SPACING



DOMES COVER W/O SPACING



COMBINED COVER

We offer a wide variety of pre-fabricated accessories in different finishes for ladder type cable trays which can be classified as under:

- Horizontal Bends / Elbows (90° / 60° / 45°) in different radius
- Vertical Inside Bend / Vertical Inside Riser (90° / 60° / 45°) in different radius
- Vertical Outside Bend / Vertical Outside Riser (90° / 60° / 45°) in different radius
- Equal & Unequal Tees
- Equal & Unequal Cross
- Reducers (Offset / Left Hand / Right Hand)



HORIZONTAL BENDS



VERTICAL RISERS (INDSIDE)



VERTICAL RISERS (OUTSIDE)



TEES (EQUAL & UNEQUAL)



CROSS (EQUAL & UNEQUAL)



REDUCERS

LIGHT & MEDIUM PERFORATED TRAYS

LIGHT DUTY PERFORATED TRAYS					MEDIUM DUTY PERFORATED TRAYS				
CAT. NO.	WIDTH	HEIGHT 1	HEIGHT 2	THICKNESS	CAT. NO.	WIDTH	HEIGHT 1	HEIGHT 2	THICKNESS
DPLPT-001	50 MM	15 MM	15 MM	1.2 MM*	DPMPT-001	50 MM	25 MM	25 MM	2.5 MM
DPLPT-002	50 MM	20 MM	20 MM	1.6 MM	DPMPT-002	50 MM	40 MM	40 MM	2.5 MM
DPLPT-003	50 MM	25 MM	25 MM	1.6 MM	DPMPT-003	50 MM	50 MM	50 MM	2.5 MM
DPLPT-004	50 MM	25 MM	25 MM	2 MM	DPMPT-004	100 MM	25 MM	25 MM	2.5 MM
DPLPT-005	100 MM	15 MM	15 MM	1.2 MM*	DPMPT-005	100 MM	40 MM	40 MM	2.5 MM
DPLPT-006	100 MM	20 MM	20 MM	1.6 MM	DPMPT-006	100 MM	50 MM	50 MM	2.5 MM
DPLPT-007	100 MM	25 MM	25 MM	1.6 MM	DPMPT-007	150 MM	25 MM	25 MM	2.5 MM
DPLPT-008	100 MM	25 MM	25 MM	2 MM	DPMPT-008	150 MM	40 MM	40 MM	2.5 MM
DPLPT-009	150 MM	15 MM	15 MM	1.2 MM*	DPMPT-009	150 MM	50 MM	50 MM	2.5 MM
DPLPT-010	150 MM	25 MM	25 MM	1.6 MM	DPMPT-010	200 MM	25 MM	25 MM	2.5 MM
DPLPT-011	150 MM	25 MM	25 MM	2 MM	DPMPT-011	200 MM	40 MM	40 MM	2.5 MM
DPLPT-012	200 MM	15 MM	15 MM	1.2 MM*	DPMPT-012	200 MM	50 MM	50 MM	2.5 MM
DPLPT-013	200 MM	25 MM	25 MM	1.6 MM	DPMPT-013	250 MM	25 MM	25 MM	2.5 MM
DPLPT-014	200 MM	25 MM	25 MM	2 MM	DPMPT-014	250 MM	40 MM	40 MM	2.5 MM
DPLPT-015	250 MM	15 MM	15 MM	1.2 MM*	DPMPT-015	250 MM	50 MM	50 MM	2.5 MM
DPLPT-016	250 MM	25 MM	25 MM	1.6 MM	DPMPT-016	300 MM	25 MM	25 MM	2.5 MM
DPLPT-017	250 MM	25 MM	25 MM	2 MM	DPMPT-017	300 MM	40 MM	40 MM	2.5 MM
DPLPT-018	300 MM	15 MM	15 MM	1.2 MM*	DPMPT-018	300 MM	50 MM	50 MM	2.5 MM
DPLPT-019	300 MM	25 MM	25 MM	1.6 MM	DPMPT-019	400 MM	25 MM	25 MM	2.5 MM
DPLPT-020	300 MM	25 MM	25 MM	2 MM	DPMPT-020	400 MM	40 MM	40 MM	2.5 MM
DPLPT-021	400 MM	25 MM	25 MM	1.6 MM	DPMPT-021	400 MM	50 MM	50 MM	2.5 MM
DPLPT-022	400 MM	25 MM	25 MM	2 MM	DPMPT-022	450 MM	25 MM	25 MM	2.5 MM
DPLPT-023	450 MM	25 MM	25 MM	1.6 MM	DPMPT-023	450 MM	40 MM	40 MM	2.5 MM
DPLPT-024	450 MM	25 MM	25 MM	2 MM	DPMPT-024	450 MM	50 MM	50 MM	2.5 MM
DPLPT-025	600 MM	25 MM	25 MM	1.6 MM	DPMPT-025	600 MM	50 MM	50 MM	2.5 MM
DPLPT-026	600 MM	25 MM	25 MM	2 MM	DPMPT-026	750 MM	50 MM	50 MM	2.5 MM
DPLPT-027	750 MM	25 MM	25 MM	1.6 MM	DPMPT-027	900 MM	50 MM	50 MM	2.5 MM
DPLPT-028	750 MM	25 MM	25 MM	2 MM	DPMPT-028	1000 MM	50 MM	50 MM	2.5 MM
DPLPT-029	900 MM	25 MM	25 MM	1.6 MM					
DPLPT-030	900 MM	25 MM	25 MM	2 MM					
DPLPT-031	1000 MM	25 MM	25 MM	1.6 MM					
DPLPT-032	1000 MM	25 MM	25 MM	2 MM					

*** MARKED ITEMS ARE FABRICATED OUT PRE GALVANIZED SHEETS AND NO COUPLER PLATES ARE PROVIDED WITH THEM**

PERFORATED TYPE TRAYS

PERFORATED TRAYS ARE MANUFACTURED BY US OUT OF 1.2 MM TO 3 MM THICK HR SHEETS IN FOLLOWING TYPE OF FINISH:

1. RED OXIDE PAINTED
2. RED OXIDE PAINTED AND FINISH PAINTING
3. POWDER COATED
4. HOT DIP GALVANISED
5. PRE-GALVANIZED

WE HAVE CLASSIFIED SHEET PERFORATED TRAY AS PER OUR STANDARD SPECIFICATIONS AS BELOW:

1. LIGHT DUTY PERFORATED TRAYS
2. MEDIUM DUTY PERFORATED TRAYS
3. HEAVY DUTY PERFORATED TRAYS

REMARKS:

1. SIZE OF COUPLER FOR 20 MM (H) TRAYS: 18 MM (W) X 210 MM (L)
2. SIZE OF COUPLER FOR 25 MM (H) TRAYS: 20 MM (W) X 210 MM (L)
3. SIZE OF COUPLER FOR 40 MM (H) TRAYS: 38 MM (W) X 210 MM (L)
4. SIZE OF COUPLER FOR 50 MM (H) TRAYS: 40 MM (W) X 210 MM (L)
5. NO OF NUT, BOLT WASHERS (SET) PROVIDED: 8 NOS FOR EACH COUPLER
6. FINISH: AS PER CUSTOMER'S REQUIREMENT
7. THICKNESS TOLERANCE: $\pm 5\%$
8. APART FROM OUR STANDARD SPECIFICATIONS, PERFORATED CABLE TRAYS CAN BE CUSTOMISED AS PER CUSTOMER'S REQUIREMENT.



DAGA POWER

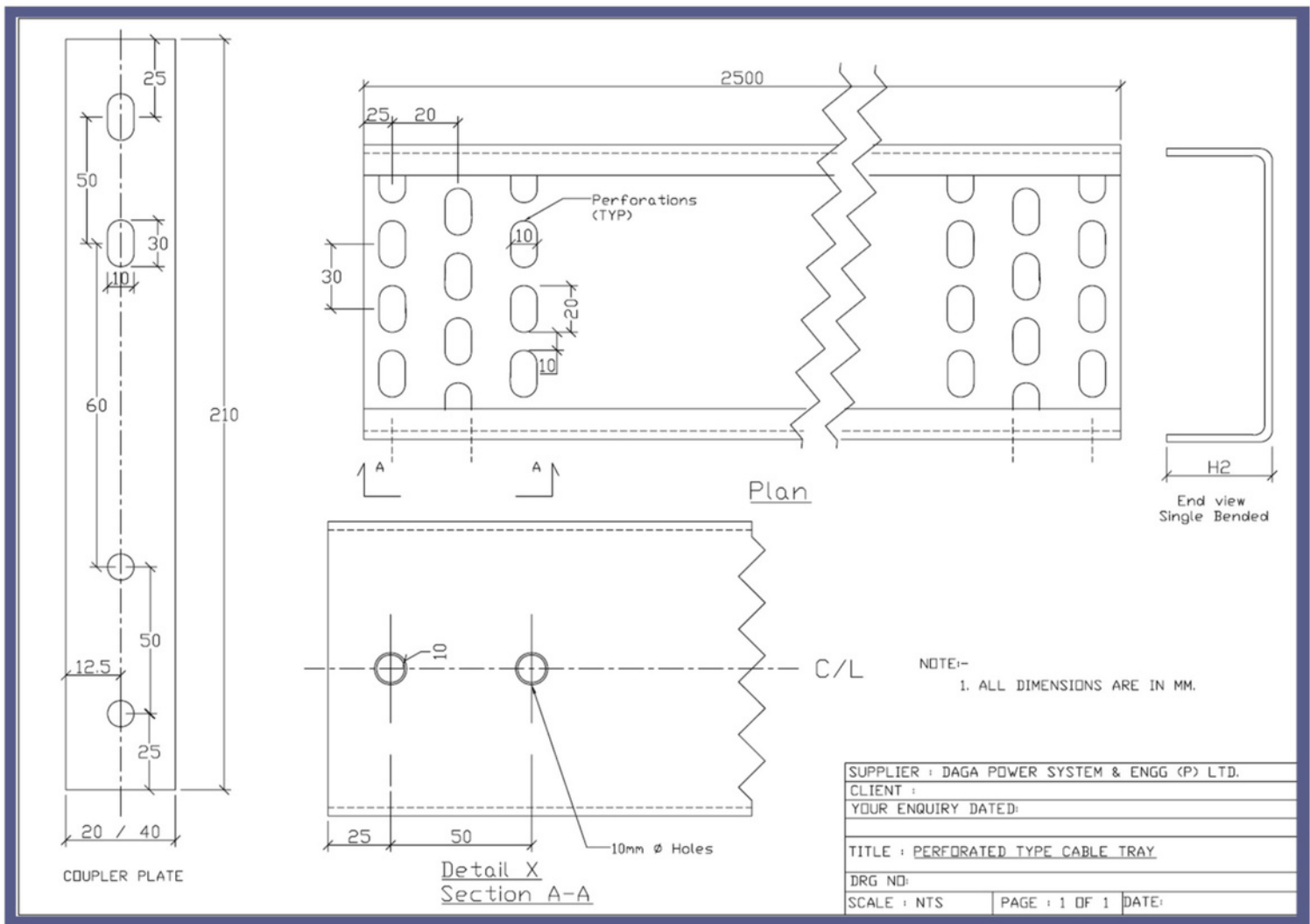
HEAVY DUTY PERFORATED TRAYS

HEAVY DUTY PERFORATED TRAYS				
CAT. NO.	WIDTH	HEIGHT 1	HEIGHT 2	THICKNESS
DPHPT-001	50 MM	25 MM	25 MM	3 MM
DPHPT-002	50 MM	50 MM	50 MM	3 MM
DPHPT-003	100 MM	25 MM	25 MM	3 MM
DPHPT-004	100 MM	50 MM	50 MM	3 MM
DPHPT-005	150 MM	25 MM	25 MM	3 MM
DPHPT-006	150 MM	50 MM	50 MM	3 MM
DPHPT-007	200 MM	25 MM	25 MM	3 MM
DPHPT-008	200 MM	50 MM	50 MM	3 MM
DPHPT-009	250 MM	25 MM	25 MM	3 MM
DPHPT-010	250 MM	50 MM	50 MM	3 MM
DPHPT-011	300 MM	25 MM	25 MM	3 MM
DPHPT-012	300 MM	50 MM	50 MM	3 MM
DPHPT-013	400 MM	25 MM	25 MM	3 MM
DPHPT-014	400 MM	50 MM	50 MM	3 MM
DPHPT-015	450 MM	25 MM	25 MM	3 MM
DPHPT-016	450 MM	50 MM	50 MM	3 MM
DPHPT-017	600 MM	50 MM	50 MM	3 MM
DPHPT-018	750 MM	50 MM	50 MM	3 MM
DPHPT-019	900 MM	50 MM	50 MM	3 MM
DPHPT-020	1000 MM	50 MM	50 MM	3 MM



DAGA POWER

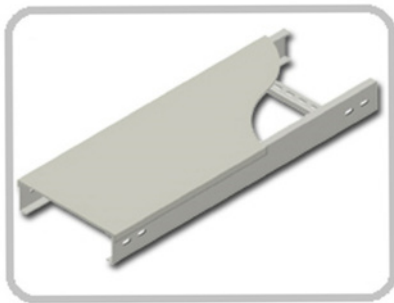
GA DRAWING OF PERFORATED TYPE TRAYS



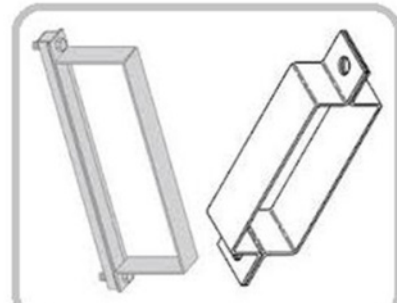
COVERS FOR PERFORATED TRAYS

WE MANUFACTURE COVERS FOR PERFORATED TYPE CABLE TRAYS OF FOLLOWING TYPES ACCORDING TO CLIENT'S REQUIREMENT:

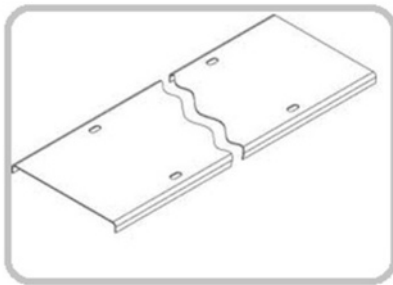
- PLAIN COVERS (PUSH TO FIT)
- PLAIN COVERS (CLAMP TYPE)
- PLAIN COVERS (VENTILATED TYPE)
- DOME SHAPED COVERS WITH SPACING
- DOME SHAPED COVERS WITHOUT SPACING
- FLAT & DOME COMBINED TYPE



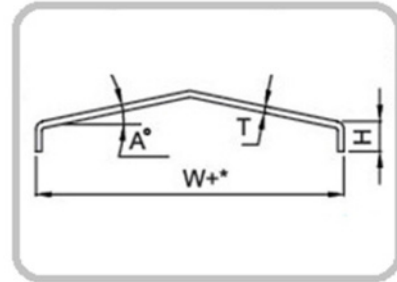
PLAIN COVERS (PUSH TO FIT)



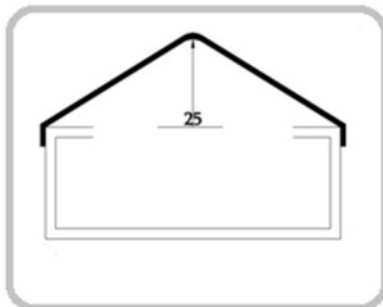
CLAMPS FOR PLAIN COVERS



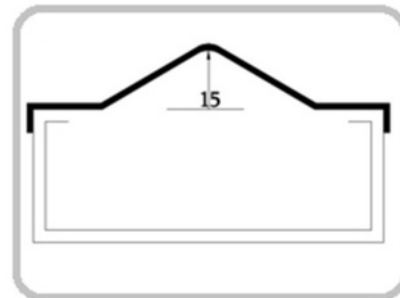
PLAIN COVER (VENTILATED)



DOME COVER WITH SPACING



DOME COVER W/O SPACING



COMBINED COVER

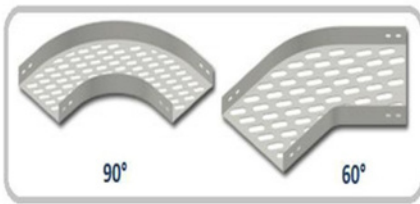


DAGA POWER

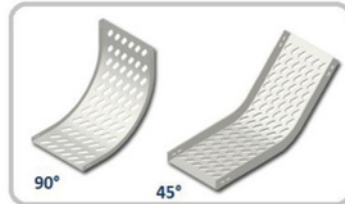
ACCESSORIES FOR PERFORATED TYPE TRAYS

WE MANUFACTURE DIFFERENT TYPE OF PRE-FABRICATED ACCESSORIES FOR PERFORATED TYPE CABLE TRAYS SUCH AS IN FINISHES LIKE POWDER COATING, PAINTED & HOT DIP GALVANIZED:

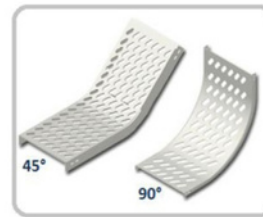
- HORIZONTAL BENDS / ELBOWS (90° / 60° / 45°)
- VERTICAL INSIDE RISERS
- VERTICAL OUTSIDE RISERS
- EQUAL & UNEQUAL TEES
- EQUAL & UNEQUAL CROSS
- REDUCERS (OFFSET / LEFT HAND / RIGHT HAND)
- FISH PLATES
- PARTITION PLATES
- BLIND ENDS / END PLATES



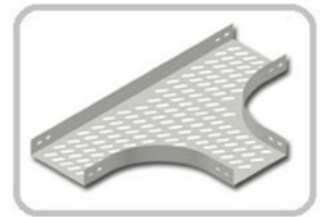
HORIZONTAL BENDS



VERTICAL RISERS (INSIDE)

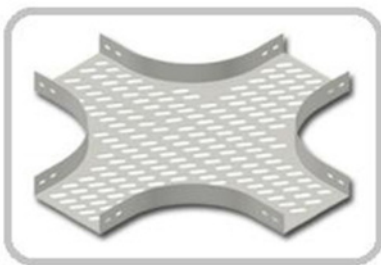


VERTICAL RISERS (OUTSIDE)

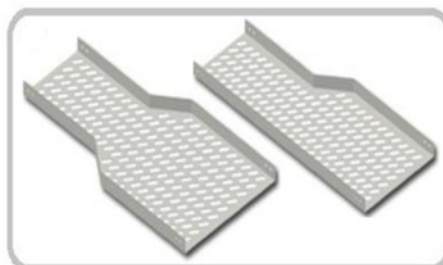


TEES (EQUAL & UNEQUAL)

ACCESSORIES FOR PERFORATED TYPE TRAYS



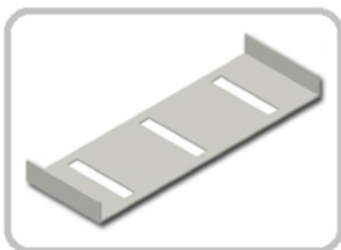
CROSS (EQUAL & UNEQUAL)



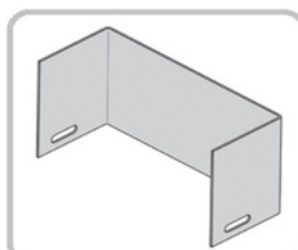
REDUCERS



PARTITION PLATES



FISH PLATES



BLIND END / END PLATE



C CHANNELS

RACEWAYS & SOLID BOTTOM TRAYS



Raceways have been re-defining the concealed cable management category as an alternative to electrical conduit for close to a century. It's a great and affordable way to conceal and protect the cables in your home or office. Our cable raceways are available in different finishes as given below:

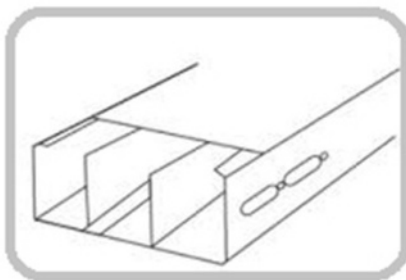
- PRE-GALVANIZED
- HOT DIP GALVANIZED
- POWDER COATED

As per customer requirement our raceways can be divided in following sections with the help of "partition compartments":

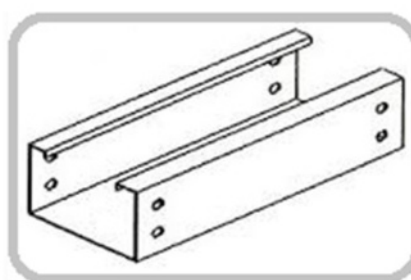
- Power
- Communications
- audio/visual (AV)

Due its ease of installation, flexibility and performance capabilities, various project consultants, builders, Interior Designers, Contactors are switching over to raceways instead of traditional conduits / Panduit's / casings. In comes in different sizes and can be customized as per client's requirement and it is available in thickness starting from 18 swg to 10 swg.

At junctions, raceways can all be joined / divided with the help of easy to install 4 way junction boxes customized for every size of raceways. These are 4 way JB's are concealed with top & side removable plates which can be opened for fixing So 1 JB can be do the work of a Tee / cross / straight joiner. The top removable plate can be cut out to make provisions for fixing power sockets & switches. Covers of raceways are provided with 8 nos of screws to tighten the cover.



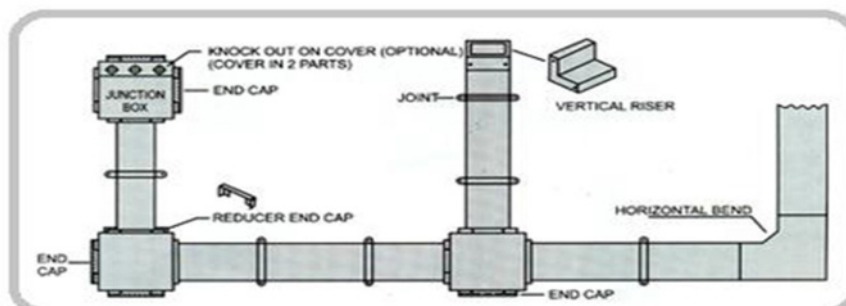
RACEWAYS



SOLID BOTTOM



JUNCTION BOX



LIST OF MACHINERIES

SL.NO.	NAMES OF MACHINES	QTY	UNIT
1	ANGLE CUTTING MACHINE	2	NOS
2	BENCH GRINDER	1	NOS
3	CAPSTON LATHE MACHINE	2	NOS
4	CNC PRESS BRAKE	2	NOS
5	CNC SHEARING MACHINE	1	NOS
6	DRILL MACHINE 25MM DIA CAPACITY	2	NOS
7	GALVANIZING PLANT {900 MM (W) X 1200 MM (D) X 9000 MM (L)}	1	NOS
8	HAND GRINDER	2	NOS
9	POWER PRESS 200 MT CAPACITY	2	NOS
10	POWER PRESS 150 MT & 100 MT CAPACITY	2	NOS
11	POWER PRESS SMALL 5 MT CAPACITY	4	NOS
12	SMALL SHEARING	1	NOS
13	SPRAY PAINTING MACHINE & GUN	2	SETS
14	WELDING MACHINE - ARC	3	NOS
15	WELDING MACHINE - MIG	5	NOS

LIST OF MACHINERIES

SL.NO.	NAMES OF TESTING EQUIPMENTS	QTY	UNIT
1	VERNIER CALIPER	2	NOS
2	MICROMETER	1	NOS
3	ELECOMETER / COATMETER (DIGITAL)	1	NOS
4	MEASURING TAPE	2	NOS



DAGA POWER

LIST OF CLIENTS



DAGA POWER

CONTACT US AT:

Regd Office:

Todi Corner, 32, Ezra Street, South Block,
5th Floor, Room No. 505,
Kolkata – 700001
Ph: +91-33-22357172

Admin Office:

Jalan Industrial Complex, Gate No 1,
Right lane no. 6, Vill: Benaira,
PO: Begri, PS: Domjur, Howrah - 711411
Ph: +91-9674165792 & +91-9674165794

Visit us at: www.dagapowergroup.com / www.dagapowergroup.in

Email us at:

- For Domestic / Export Sale enquiries: marketing@dagapowergroup.in
- For Dealership enquiries: md@dagapowergroup.com
- For any product related information: marketing@dagapowergroup.com

Factory:

UNIT –I:

Jalan Industrial Complex, Gate No. III,
Vill: Banaria, PO: Begri, PS: Domjur,
Howrah – 711411
Contact: Mr. Sajal Barui: +919831940316
Email: dagapowerunit.1@gmail.com

UNIT-II:

Jalan Industrial Complex, Gate No 1,
Right lane no. 6, Vill: Benaira,
PO: Begri, PS: Domjur, Howrah - 711411
Ph: +91-9674165792 & +91-9674165794
Contact: Mr. Shantanu Samanta: +918967277555
Email: me.engg.santanu@gmail.com